

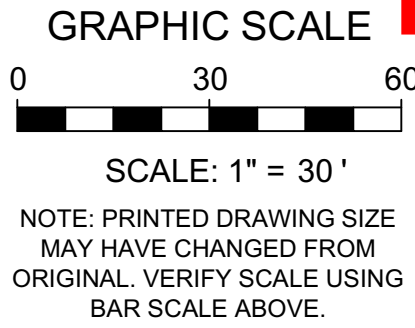
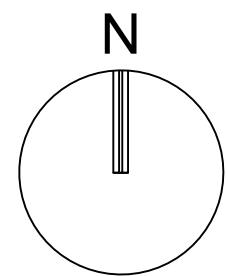
CPTED PLAN GENERAL NOTES:

- CPTED & SECURITY STRENGTHENING CONDITIONS REQUIRED FOR APPROVAL MUST EACH BE INCLUDED AND DESCRIBED IN DETAIL ON THE NARRATIVE AND DRAWING PLANS. ALSO, DEVELOPER AND/ OR LEGAL AGENT MUST INITIAL EACH INDIVIDUAL LISTED ITEM DECLARING COMPLIANCE WITH THE PERMIT AND COMPLIANCE.
- BASIS AND ALL OF THE CPTED SECURITY STRENGTHENING NARRATIVE PLAN CONDITIONS ARE PART OF AND INTEGRAL TO THE APPROVED DEVELOPMENT PLANS AND MUST BE COMPLETED FOR PROJECT APPROVAL.
- THE SERVICES OF AN INDEPENDENT, AND HIGHLY EXPERIENCED, QUALIFIED, AND CERTIFIED SECURITY CRIME PREVENTION/ CPTED CONSULTANT ARE HIGHLY RECOMMENDED TO ACHIEVE AND MAINTAIN OBJECTIVE CREDIBLE SECURITY REVIEW INTEGRITY, AND TO EXPEDITE PROCESSING.
- THIS SAFETY AND SECURITY REVIEW DOES NOT GUARANTEE A CRIME WILL NEVER OCCUR; IT IS AN EFFORT TO MITIGATE OPPORTUNITIES FOR CRIME AND TO HELP AVOID ANY PRESENT AND FUTURE SECURITY DEFICIENCIES, CONFLICTS, THREATS, BREACHES, OR LIABILITIES THAT MIGHT OCCUR WITHOUT ANY REVIEW.
- IF THESE SECURITY STRENGTHENING AND CPTED DRAWING AND

- NARRATIVE PLANS ARE A RESUBMITTAL, YOU MAY INCLUDE 'COMMENT RESPONSES' TO CONDITIONS, BUT YOU MUST ABSOLUTELY INCLUDE YOUR RESPONSES ONTO BOTH THE ACTUAL DRAWING AND NARRATIVE PLANS.
- PLEASE NOTE THAT ALL COMMENTS MADE BY THE BROWARD SHERIFF'S OFFICE REGARDING YOUR PLAN ARE PRELIMINARY ONLY, AS ADDITIONAL SECURITY STRENGTHENING AND CPTED ATTRIBUTES MAY BE REQUIRED AS DEVELOPMENT PROGRESSES.
 - AS PER CODE 155.2407.E.9., AT THE TIME OF PERMIT SUBMITTAL, THE CPTED SECURITY STRENGTHENING DRAWING PLAN AND SEPARATE CPTED SECURITY STRENGTHENING DRAWING PLAN NARRATIVE SHALL BOTH BE SUBMITTED AS PART OF THE REQUIREMENTS FOR PLANNING & ZONING REVIEW AND APPROVAL.
 - PLEASE REFER TO SHEET SP-202 AND SP-203 FOR A COMPLETE LIST OF CPTED NOTES AND NARRATIVE.

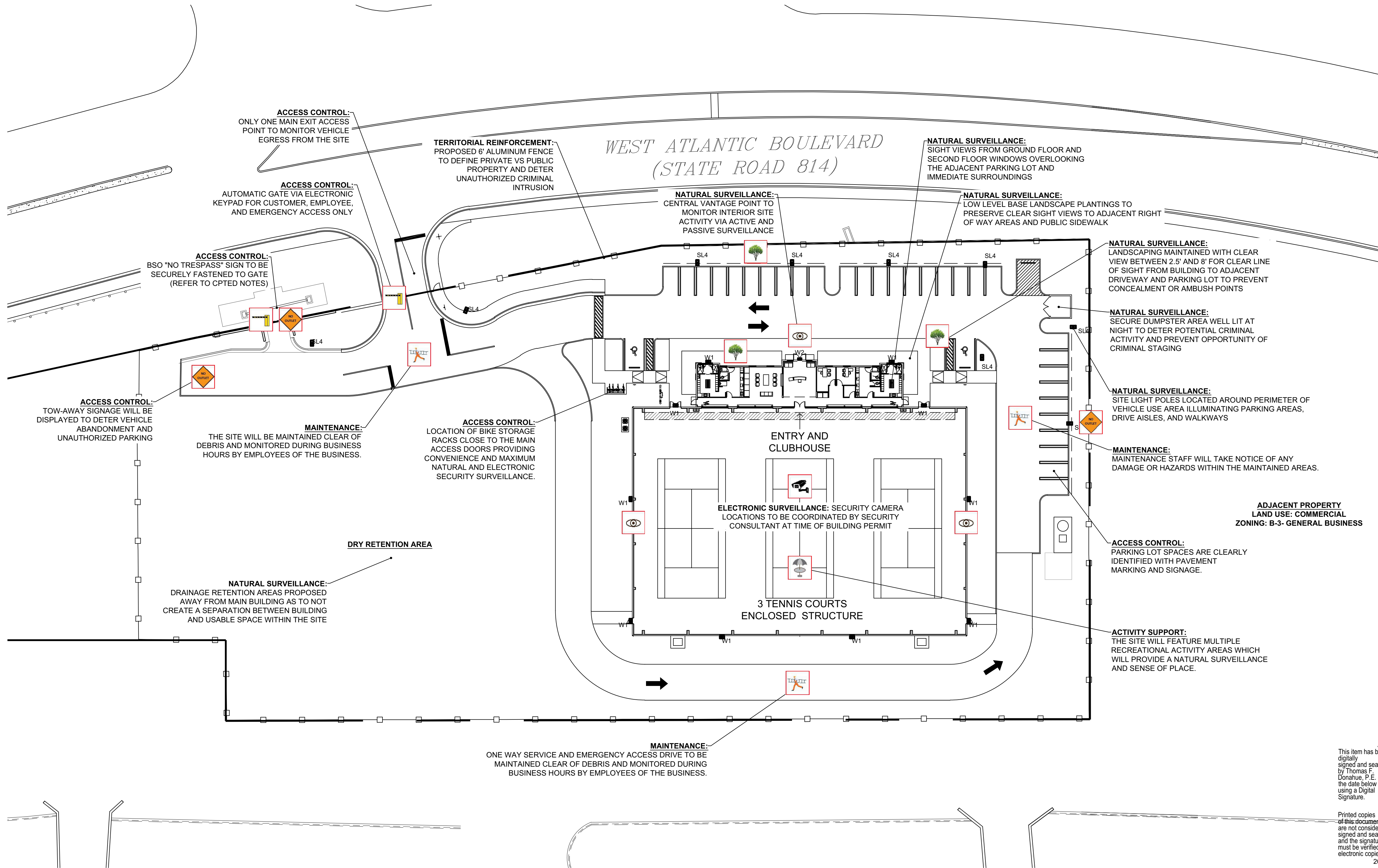
LEGEND:

- M: MAINTENANCE
- ACN: ACCESS CONTROL- NATURAL
- TR: TERRITORIAL REINFORCEMENT
- SE: SURVEILLANCE- NATURAL
- SE: SURVEILLANCE- ELECTRONIC
- AS:ACTIVITY SUPPORT
- ACP: ACCESS CONTROL - PHYSICAL
- TR: TERRITORIAL REINFORCEMENT



REVISIONS	
NO.	DESCRIPTION
1.	
2.	
3.	
4.	
5.	
6.	
7.	
8.	
9.	
10.	

ALL IDEAS, DESIGN, ARRANGEMENTS, AND PLANS INDICATED OR REPRESENTED BY THIS DRAWING ARE OWNED BY ANY PROPERTY OF THE OFFICE, AND WHILE CREATED, ENVELOPED, AND DEVELOPED FOR THE USE OF, AND IN CONNECTION WITH THE SPECIFIED PROJECT, NONE OF SUCH IDEAS, DESIGN, ARRANGEMENTS, AND PLANS SHALL BE USED BY, OR DISCLOSED TO ANY PERSON, FIRM, OR CORPORATION FOR ANY PURPOSE WITHOUT WRITTEN PERMISSION OF RWB LINARES ARCHITECTURE, INC.



FLORIDA INDOOR TENNIS

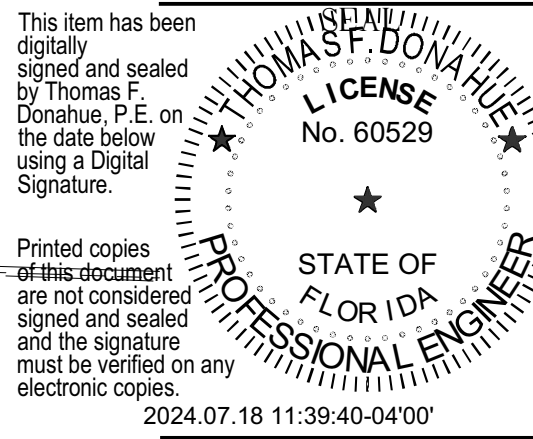
POMPAHO BEACH, FL 33069

3000 NORTH MILITARY TRAIL, SUITE 209
BOCA RATON, FLORIDA 33431
PHONE 561-391-0081 FAX 561-391-0085
EMAIL mail@rwb-arch.com

RWB
Linares
ARCHITECTURE

PROJECT # 21-035
DATE PER ISSUANCE
SHEET # SP-201

CPTED PLAN



THOMAS F. DONAHUE, P.E.
FLORIDA REG. NO. 60529
(FOR THE FIRM)